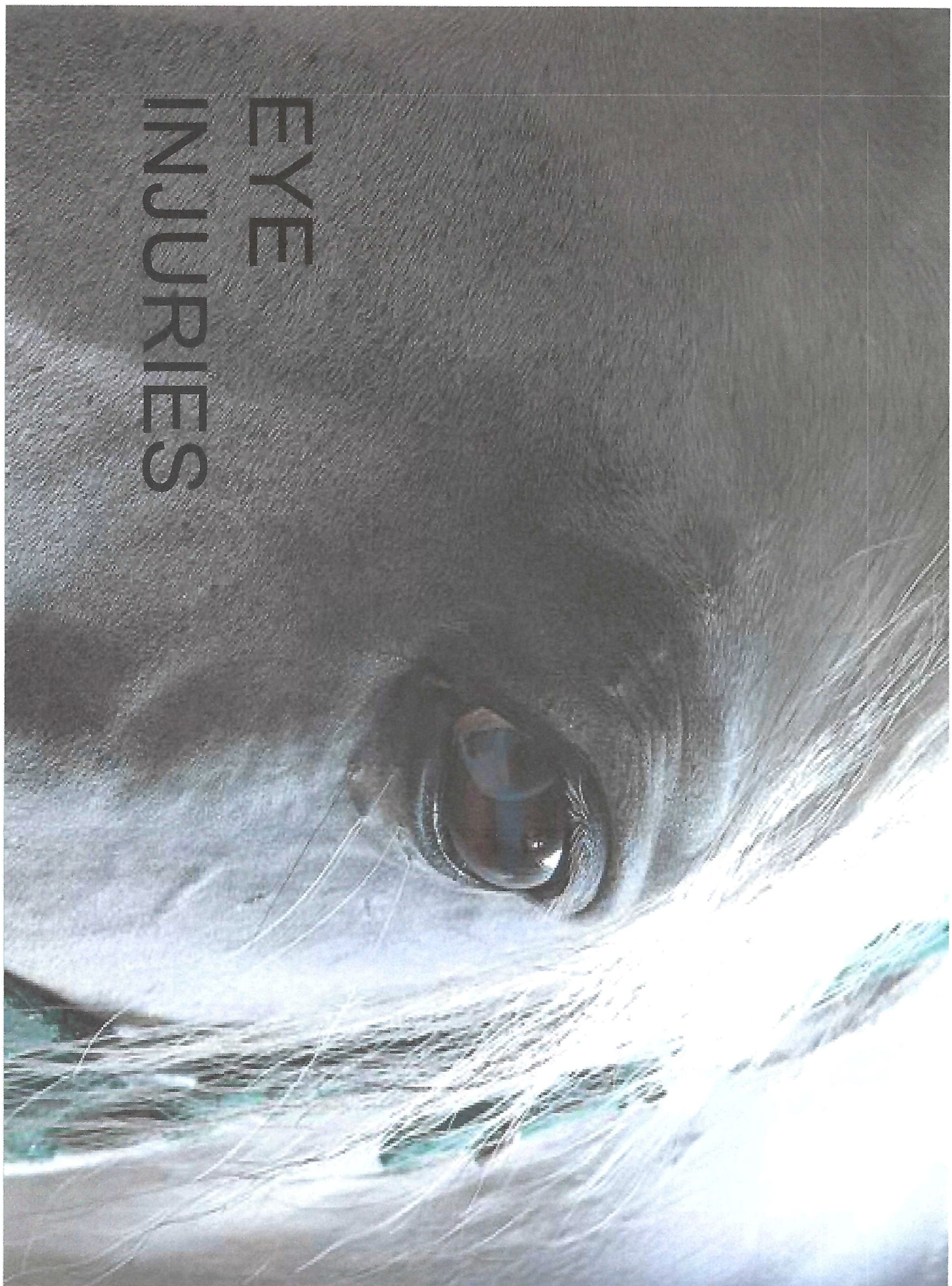


EYE
INJURIES



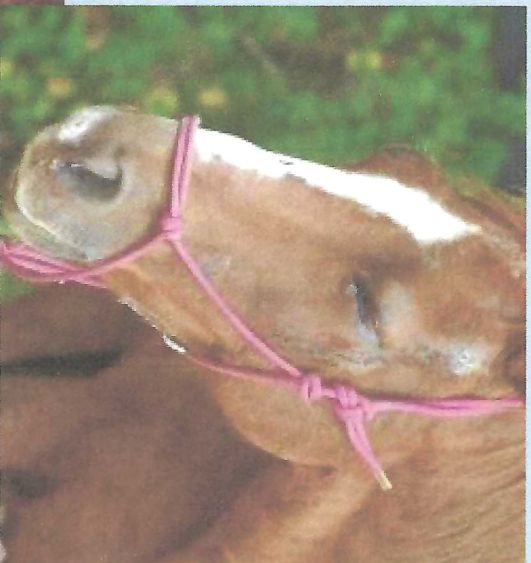


SIGN OF AN EYE PROBLEM



The future of veterinary medicine
in your community today.

An eye injury may be indicated by any of the following:



Excess tear production

Eye looks cloudy

Mucous discharge

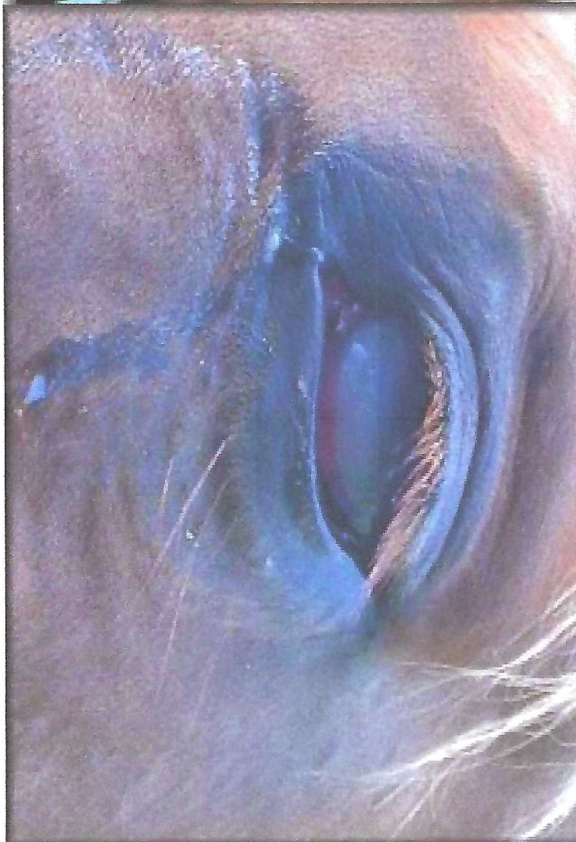
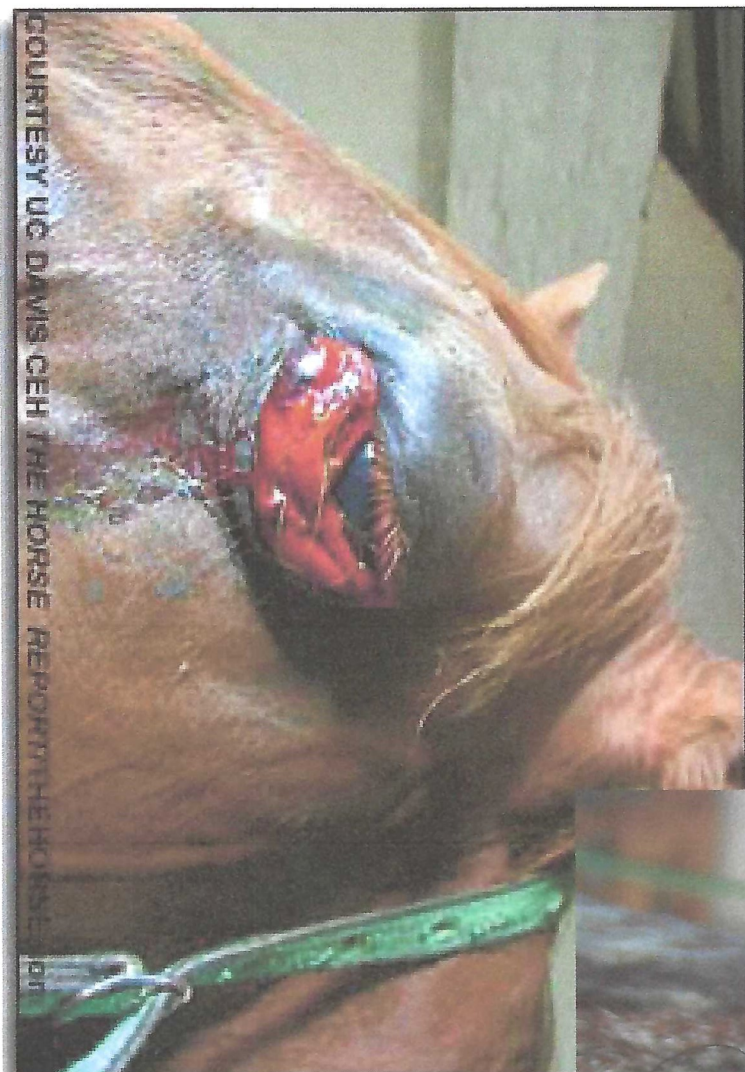
Holding the eye closed

Light sensitivity

Swelling around the eye
or eyelids

Laceration of the eyelid





COURTESY UC DAVIS CEH THE HORSE REPORT THE HORSE



WHAT TO DO???

- Call your vet!
- Do NOT attempt to treat an eye injury or instill any medication
- Wait for your veterinarian
- Try to prevent the horse from rubbing the eye




Pitchuck
VETERINARY HOSPITAL

The future of veterinary medicine
in your community today.